

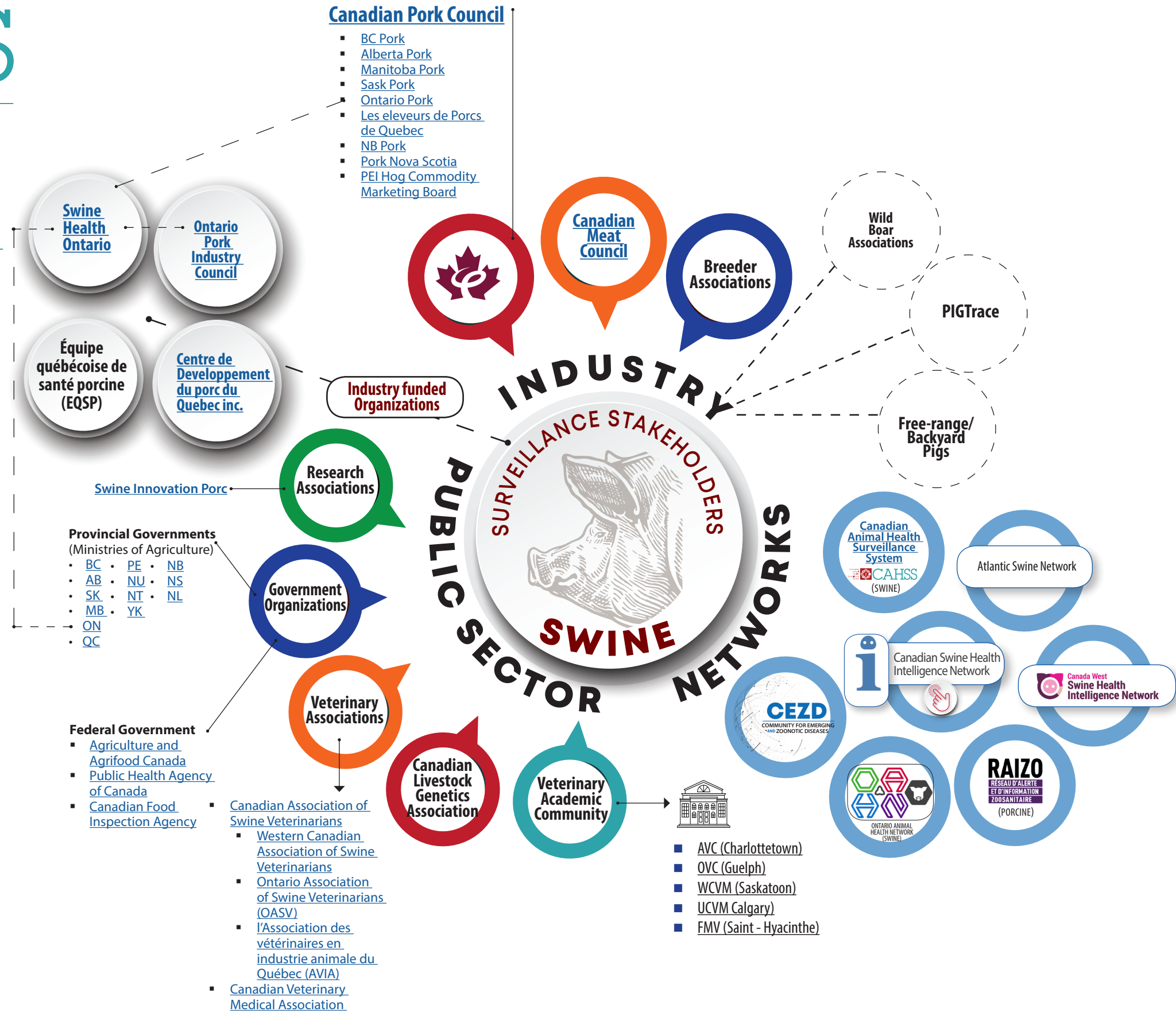
**SWINE SURVEILLANCE**  
*from a stakeholder perspective*

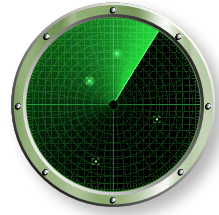
**CONTEXT**

The *Swine Network* links the diverse swine community to encourage and support integrated and whole-of-system swine health surveillance. Effective and responsive health surveillance safeguards the prosperity of Canada's swine industry.

The *CAHSS Swine Network* includes members from the National and Provincial pork councils/organizations/networks, Veterinary colleges, Diagnostic laboratories, Provincial governments, CFIA, AAFC, PHAC, National and Regional Veterinary organizations/networks.

The *Swine Network* is part of the *Canadian Animal Health Surveillance System (CAHSS)*, which connects animal health, public health and wildlife health experts from Canada's animal sectors. In addition to the *Swine Network*, CAHSS member networks include AMU, aquatic, beef and dairy cattle, equine, poultry and wildlife. CAHSS members work on diseases and issues of concern, including reportable and zoonotic diseases, production limiting diseases and antimicrobial use surveillance.





## Canadian Swine Health Intelligence Network

### OUR PURPOSE

The Canadian Swine Health Intelligence Network (CSHIN) team meets to discuss swine diseases and emerging threats that were brought forth from the quarterly regional network calls. CSHIN's goal is to support the social network of the people participating in the discussions based on the information and analysis on swine health from the regional networks.

### WHO WE ARE

The CSHIN is also known as the national swine health network team. This team meets once per quarter (4 meetings per year) and consists of members representing each of the 4 regional networks that feed information and data into CSHIN (OAHN Swine (represents Ontario), RAIZO (represents Quebec), CWSHIN (represents BC, Alberta, Saskatchewan and Manitoba) and the Atlantic network (represents New Brunswick, Nova Scotia, P.E.I and Newfoundland). Each regional network sends at least one representative from private practice, laboratories, and the provincial network lead(s) that contribute to and are part of the CSHIN team. A representative from the Canadian Pork Council (CPC) and the Canadian Association of Swine Veterinarians (CASV) along with a team representing different program areas from CFIA also participate in CSHIN.

### INFORMATION USED

Each regional network contributes reports on swine health based on data that is collected directly from participating laboratories and swine health information collected directly from practicing swine veterinarians throughout Canada.

### OUR INTELLIGENCE PRODUCTS

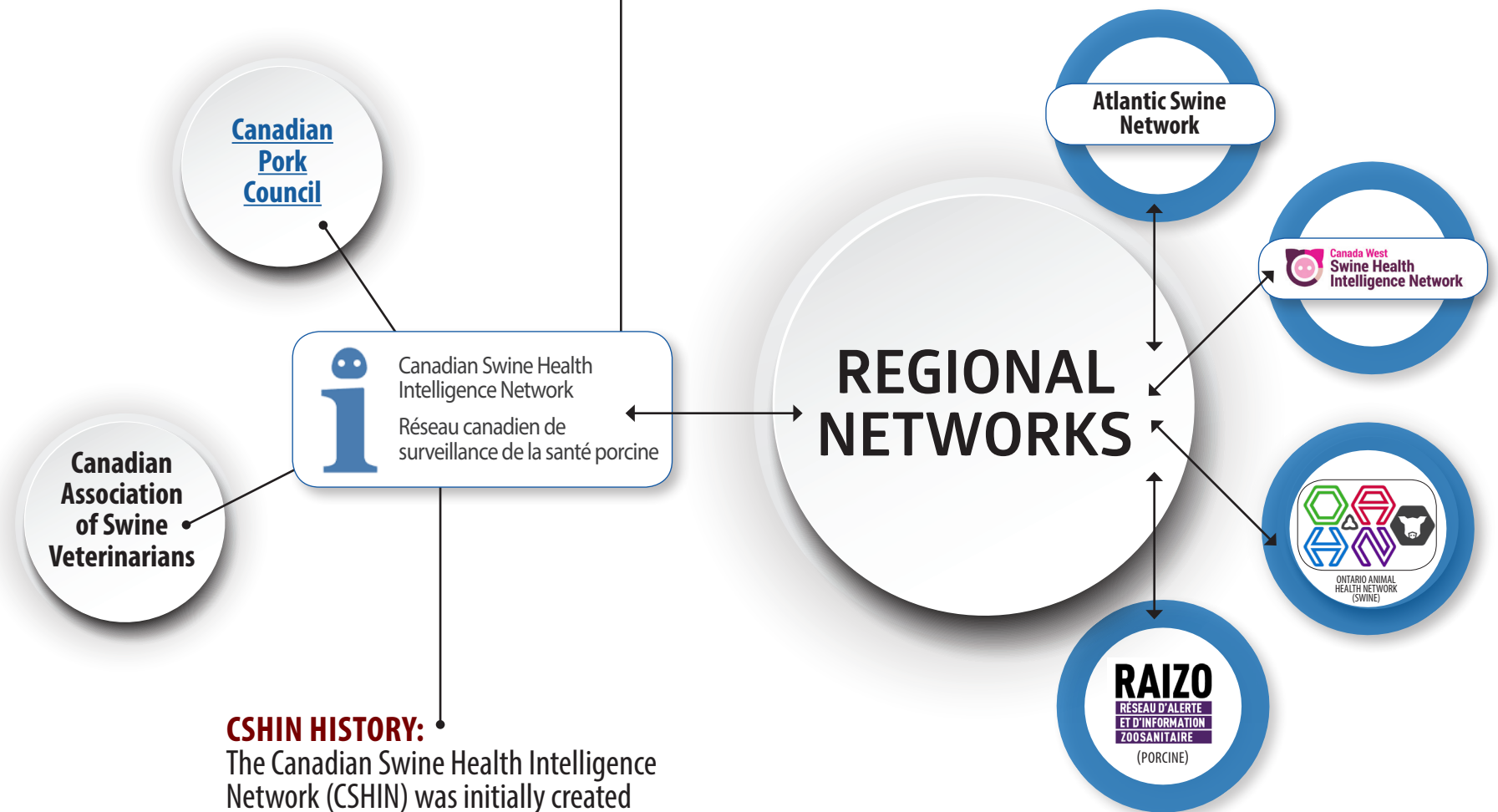
CSHIN produces two quarterly reports:

1. for Canadian swine veterinarians
2. for Canadian swine producers. CSHIN team members review and approve the messaging that is included in these reports prior to dissemination.

CSHIN team members review and approve the messaging that is included in these reports prior to dissemination. CSHIN also provides updates (as needed) on emerging disease threats and or challenges for example Porcine Epidemic Diarrhea Virus (PEDV), African Swine Fever (ASF), Senecavirus A (SVA).

### CSHIN OBJECTIVES

To facilitate the sharing of swine health information nationally and to provide national, coordinated, swine disease updates to producers and veterinarians that also highlight emerging disease threats and challenges.



### CSHIN HISTORY:

The Canadian Swine Health Intelligence Network (CSHIN) was initially created as a product of the Canadian Swine Health Board. When the Canadian Swine Health Board disbanded, CSHIN continued under joint funding from the Canadian Pork Council (CPC) and the Canadian Association of Swine Veterinarians (CASV).

